

**KEBACARE**  
REUSABLE PROTECTIVE  
MASK TYPE IIR



# ONE BRAND WITH TWO PROTECTIVE OPTIONS

## Full Protection Mask Model

### Very Crowded Environments



## Why Choose the Full Protection Mask Model

### Full Protection Antiviral Mask Features;

- Antiviral mask reinforced with special inner and outer two layers
- High mechanical strength
- An average of 0,5 micron meter pore structure with increased particle filtration
- Designed for use in crowded and dense areas
- High level of protection, empowered structure
- Antiviral and microbiological protection is provided with two layers of high dense patented technical textile fabric

## Comfort Mask Model

### Summer And Hot Geographies



## Why Choose the Comfort Mask Model

### Comfort Antiviral Mask Features;

- High dense single layer antiviral mask
- Good mechanical strength
- Particle filtration is made of an average of 2 micron meters pore, which is better than most SMS surgical masks
- Designed for use in open and non-crowded areas, especially during the summer season
- Lightweight construction with a high level of comfort
- Antiviral and microbiological protection is provided with a single layer of high dense patented technical textile fabric

## SUITABLE FOR INDOOR / OUTDOOR



Office



School



Work



Outdoor Cycling



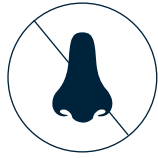
Outdoor Running



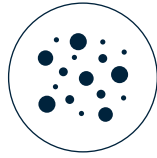
Outdoor Walking



Antiviral



Prevents Bad Odor



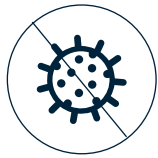
Antimicrobial



Repellency



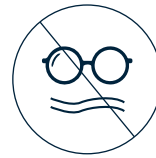
Washable



Antibacterial



Reusable



No Fog

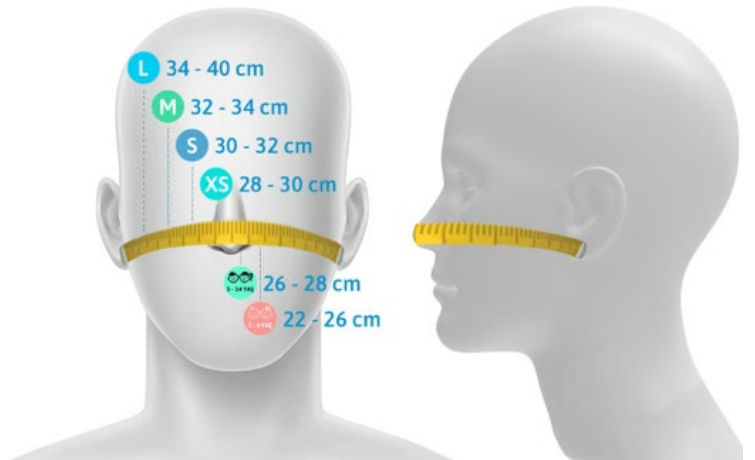


## HOW TO CHOOSE THE RIGHT MASK SIZE ?

To measure properly, take a measuring tape and place it against your earlobe across to the other earlobe by crossing over your nose.

That measurement will correspond with the size listed on table.

- Baby size** : (2 - 4) years old
- Kids size** : (5 - 14) years old
- Adults Size** : XS / S / M / L



## COLOR OPTIONS



● Black

● Green

● Grey



● Navy Blue

● Red



○ White

● Light Blue

● Pink

## KEBACARE MASK FEATURES / COMFORT

### SIZE

**Baby size** : (2-4) years old

**Kids size** : (5-24) years old

**Adults size** : XS / S / M / L

Note: Standard man size recommendation is "M"

Standard woman size recommendation is "S" size.

### BREATHING

Patented comfortable, lightweight, breathable fabric certified with world-class breathability tests.

### MOISTURE

Water vapor discharge is provided by the moisture control technology. As a result, a dry and healthy mask experience without moisture is provided.

### STRETCH-KNIT HEADBANDS

Specially produced for all sizes, flexible and enhance wearer comfort

### ODOR

The silver (active silver) and active ammonium silane content (ingredient) within the breathable fabric, prevents the odor by killing the bacteria in the mouth.



## KEBACARE MASK FEATURES / PROTECTION

### ANTI-VIRAL PROTECTION

Antiviral effect (viral reduction > 96,18%) as a result of active silver content and active ammonium silane coating placed in a patented knit fabric acting as a dense textured barrier.

### MICROBIAL CLEANING

Apart from bacteria and viruses, it destroys microbials and harmful microorganisms with active protective silver and ammonium silane components in the product.

Microbial cleaning is provided.

### REPELLENCY AGAINST LIQUIDS

Fluids that may come onto the mask are pushed to the surface and poured. In this way, it is ensured that fluids that may contain infectious or harmful content are kept away from the mask.

In addition, rain drops cannot penetrate the mask in open weather conditions. In this way, long and comfortable mask experience is provided in outdoor environments.

### ANTI-BACTERIAL PROTECTION

Thanks to the active ingredient on the fabric surface, it kills bacteria attached to the surface. Antibacterial effect provides a decrease in the number of bacteria > 99%. Also, thanks to its special knitted fabric structure, it prevents the passage of bacteria during breathing. Bacteria filtration efficiency > 99.9%.

### SELF-DISINFECTION SANITATION TECHNOLOGY

With contact to the light, the active elements and compounds such as silver and ammonium silane in the product provides a self-cleaning (sanitation) effect. It provides active disinfection all day long.



The patented knit structure that lets moisture out via micrometer pores

## RE-USE (SUSTAINABILITY)

### WASHABLE

All content used in the production of the mask is designed to maintain all effectiveness after washing. KEBACare masks can be washed at 60°C, 30 times without losing any function in the machine and used after drying. Also, if hand washed with soap, the number of uses and efficiency increases to 99 washes.

Thanks to the self-cleaning technology of the mask, machine and hand washing is aimed at removing the dirt on the coating.

### SUSTAINABILITY & ENVIRONMENTALLY FRIENDLY

Since disposable masks cannot be re-evaluated, they waste a lot of resources and cause environmental pollution. In addition, due to the danger of the virus, it must be burned and disposed. Therefore, substances and gases harmful to the environment and the atmosphere are released. The raw materials used in KEBACare masks with reusable technology can be produced by consuming much less resources and offer an environmentally friendly solution when compared to disposables. The raw material content is also suitable for recycling.

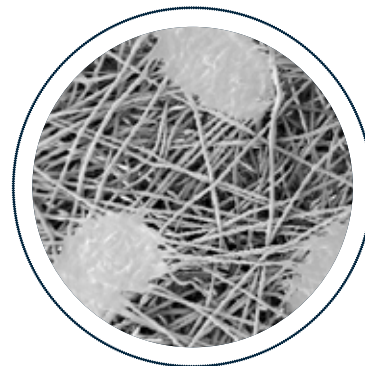
## COMPARISON



50 times magnified view

### KEBACARE Mask

- It can be used many times and can be stored safely.
- It kills and destroys viruses and bacteria
- It never smells bad
- Available with range of sizes that ensures to fit the mask to your face
- It does not cause headaches or pain in the ear
- It looks stylish and can be combined with your outfit
- It disinfects/sanitize itself; it is always clean
- It is fluid repellent, does not get wet
- It does not fog in glasses
- It can be washed even at 90 °C
- It is economical and inexpensive as it needs to only be purchased once



50 times magnified view

### Surgical Mask

- It is disposable and must be thrown away after use
- It collects viruses and bacteria that accumulates on its surface.
- It smells bad.
- It is attached to the face with a single measure.
- It causes pain in the ear and headaches.
- It offers a repulsive and depressing look.
- It's cleanliness is relative and not guaranteed
- It absorbs liquids and gets wet.
- Makes fogging in glasses.
- It should never be washed.
- Discarded every time, continuous supply is necessary



#### ISTANBUL

Fenerbahçe Mah.  
Cemil Topuzlu Cad. No 31/4  
34726 Kadıköy / İstanbul  
T : +90 216 999 0 488

[sales@kebahealth.com](mailto:sales@kebahealth.com)  
[kebahealth.com](http://kebahealth.com)